



**E & A CONSULTING GROUP, INC.**

*Engineering Answers*

10909 Mill Valley Road, Suite 100 • Omaha, NE 68154-3950  
P 402.895.4700 • F 402.895.3599  
www.eacg.com

Dear Homeowner:

The SID has contracted concrete work to be done on the streets in your SID. A contractor will be on site to do work which includes removing the existing concrete that is damaged and replacing it with new pavement.

Throughout the course of this project, there could be some minimal damage done to yards and or sprinkler systems. The contractor that is on site will be responsible for replacing any damaged sprinkler lines and/or heads. They will also be replacing any sod that is torn up while on site. Once the new sod is laid, it will be the responsibility of the homeowner at each lot to water the new sod until it has re-established itself.

Before starting the work on site, each contractor must put in a call and have all the utilities in the area located. You might notice some areas in your yard that have been flagged and/or spray painted. This does not indicate the area in which they will be working. It is just to give them an idea of what kind of utilities are in the area that could possibly be hit while the contractor is on site working.

All work that is completed in public Right-of-Way and follow City of Omaha and Sarpy County specifications.

The work in your SID should not take longer than 30 days to complete. Please let me know if you have any questions or concerns on this at all.

Thank You,

A handwritten signature in black ink, appearing to read 'Nelson C Flores', written over a horizontal line.

**Nelson C Flores**

Construction Administration Tech.

***Engineering Answers***...by assisting our clients

E & A Consulting Group, Inc.

10909 Mill Valley Road, Suite 100 • Omaha, NE 68154

402.895.4700 (o)

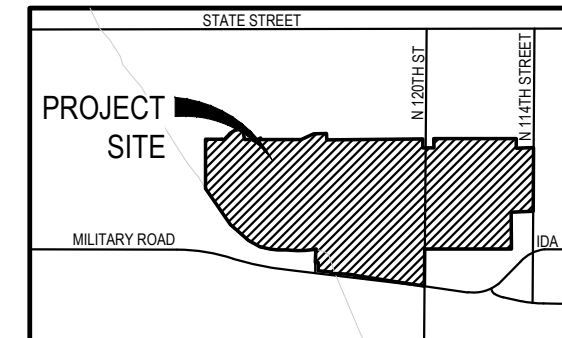
[eacg.com](http://www.eacg.com)



# DEER CREEK

## 2023 STREET RECONSTRUCTION

SID NO. 405  
DOUGLAS COUNTY, NEBRASKA



VICINITY MAP



### APPROXIMATE BID QUANTITIES

ITEM	DESCRIPTION	QUANTITY	UNIT
1	CONCRETE PAVEMENT REPAIR, LARGE AREA	1,083	SY
2	CONCRETE PAVEMENT REPAIR, SMALL AREA	288	SY
3	FULL DEPTH SAW CUT EXISTING PAVEMENT	1,465	LF
4	ADJUST MANHOLE TO GRADE	1	EA
5	REMOVE & REPLACE PCC SIDEWALK	64	SF
6	REMOVE & REPLACE PCC CURB RAMP	268	SF
7	CONSTRUCT DETECTABLE WARNING PANEL (2)	16	SF
8	REMOVE AND REPLACE FAULTY SUBGRADE	25	TN
9	REPLACE CURB INLET TOP WITH ARMOR FACE	1	EA



### INDEX OF SHEETS

SHEET NO.	DESCRIPTION
1	COVER
2	WEST
3	CENTRAL
4	EAST
5	TOTAL QUANTITIES
6	COMPOSITE MAP



#### APPLICANT

SID 405  
Ed Fuxa, Chairman  
11440 West Center Road  
Omaha, NE 68144  
P: 402.334.0700  
F: 402.334.0815  
larry@fjblaw.com

#### DESIGNER

E & A Consulting Group, Inc  
Teresa Wooten, P.E.  
10909 Mill Valley Road, Suite 100  
Omaha, NE 68154  
P: 402.895.4700  
F: 402.895.3599  
twooten@eacg.com

#### INSPECTOR

E & A Consulting Group, Inc  
Randall L. Pierce, P.E.  
10909 Mill Valley Road, Suite 100  
Omaha, NE 68154  
P: 402.895.4700  
F: 402.895.3599  
rpierce@eacg.com

#### CONTRACTOR

**E & A CONSULTING GROUP, INC.**  
 Engineering • Planning • Environmental & Field Services  
 10909 Mill Valley Road, Suite 100 • Omaha, NE 68154  
 Phone: 402.895.4700 • Fax: 402.895.3599  
 State of NE Certificate of Authorization #CA0008



**DEER CREEK**  
**2023 STREET**  
**RECONSTRUCTION**  
 SID 405  
 DOUGLAS COUNTY, NEBRASKA

**COVER**

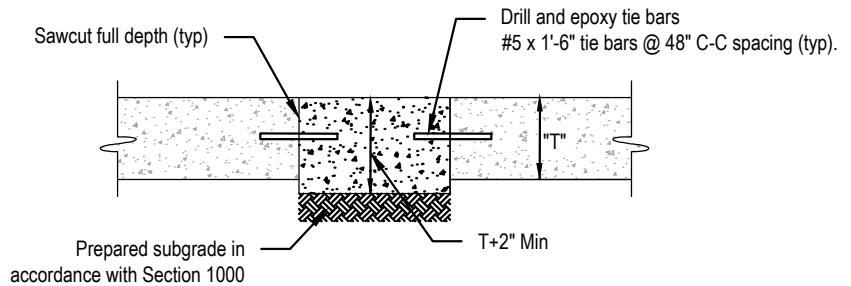
Revisions	Date	Description
1	02/24/2023	TAM
2		ESB

Proj No: 2008.276.014  
 Date: 02/24/2023  
 Designed By: TAM  
 Drawn By: ESB  
 Scale: 1" = 150'  
 Sheet: 1 of 6



2023 STREET RECONSTRUCTION									
AREA NO.	NO. POURS	SAW CUT L.F.	CURB L.F.	WIDTH	X	LENGTH	LARGE AREA EST S.Y.	SMALL AREA EST S.Y.	NOTES
1	2	55	30	9.0	x	30.0		30.0	
				10.0	x	15.0		16.7	
2	1	40	15	12.5	x	15.0		20.8	
3	1	85	40	12.5	x	60.0	83.3		Adjust Manhole
4	1	55	30	12.5	x	30.0		41.7	
5	1	30	10	10.0	x	10.0		11.1	
6	1	30	10	10.0	x	10.0		11.1	
7	1	100	75	12.5	x	75.0	104.2		

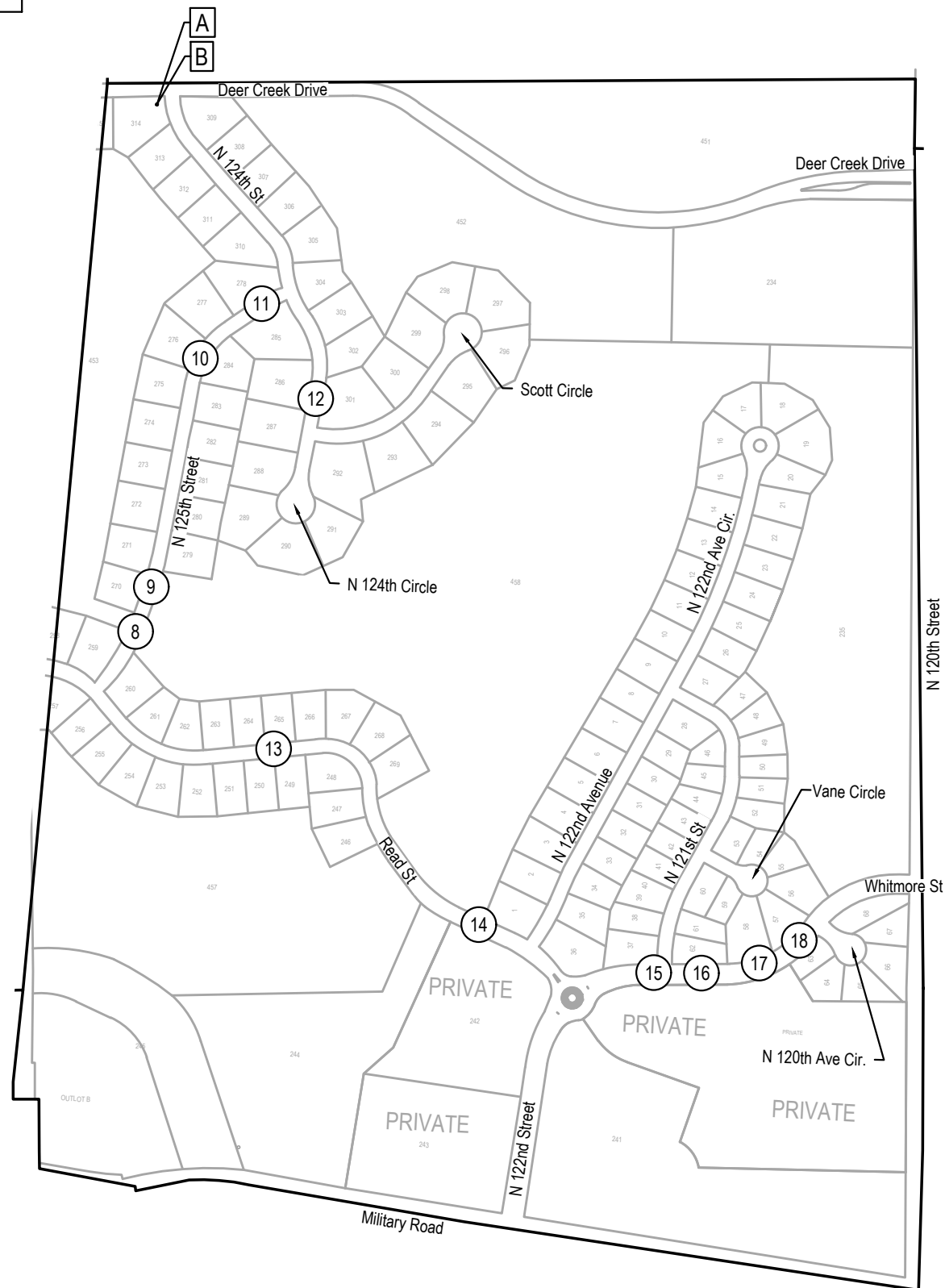
2023 STREET RECONSTRUCTION					
AREA NO.	TYPE	APPROX. DIMEN.		EST S.F.	NOTES
C	Curb Ramp	7	x 5	35.0	
D	Sidewalk	4	x 4	16.0	



**SMALL AREA CONCRETE PAVEMENT REPAIR DETAIL**  
 NOT TO SCALE

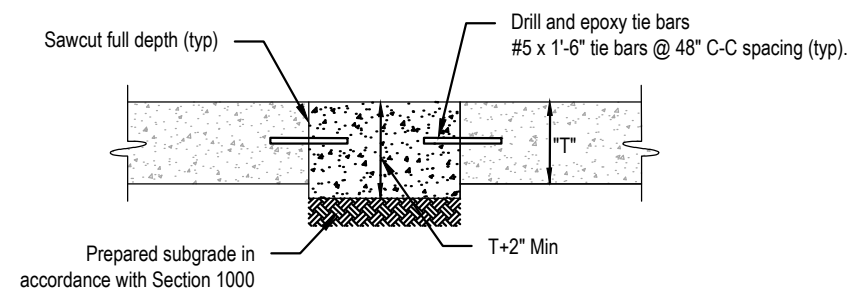


E & A CONSULTING GROUP, INC. Engineering • Planning • Environmental & Field Services <small>10809 Mill Valley Road, Suite 100 • Omaha, NE 68154                  Phone: 402.265.4700 • Fax: 402.265.3559                  www.eandagroup.com                  State of NE Certificate of Authorization #CA0008</small>	
DEER CREEK 2023 STREET RECONSTRUCTION <small>SID 405                  DOUGLAS COUNTY, NEBRASKA</small>	
WEST	
Revisions Date Description	Prog No: 2008.276.014 Date: 02/24/2023 Designed By: TAMM Drawn By: ESN Scale: 1" = 48" Sheet: 2 of 6



2023 STREET RECONSTRUCTION									
AREA NO.	NO. POURS	SAW CUT L.F.	CURB L.F.	WIDTH	X	LENGTH	LARGE AREA EST S.Y.	SMALL AREA EST S.Y.	NOTES
8	1	55	30	12.5	x	30.0		41.7	
9	1	55	30	12.5	x	30.0		41.7	
10	1	70	45	12.5	x	45.0	62.5		
11	2	50	30	15.0	x	25.0		41.7	
12	1	70	45	12.5	x	45.0	62.5		
13	2	85	60	12.5	x	60.0	83.3		
14	1	85	60	12.5	x	60.0	83.3		
15	1	145		12.5	x	60.0	83.3		
16	2	110	60	25.0	x	60.0	166.7		
17	2	110	60	25.0	x	60.0	166.7		
18	2	95	45	25.0	x	45.0	125.0		

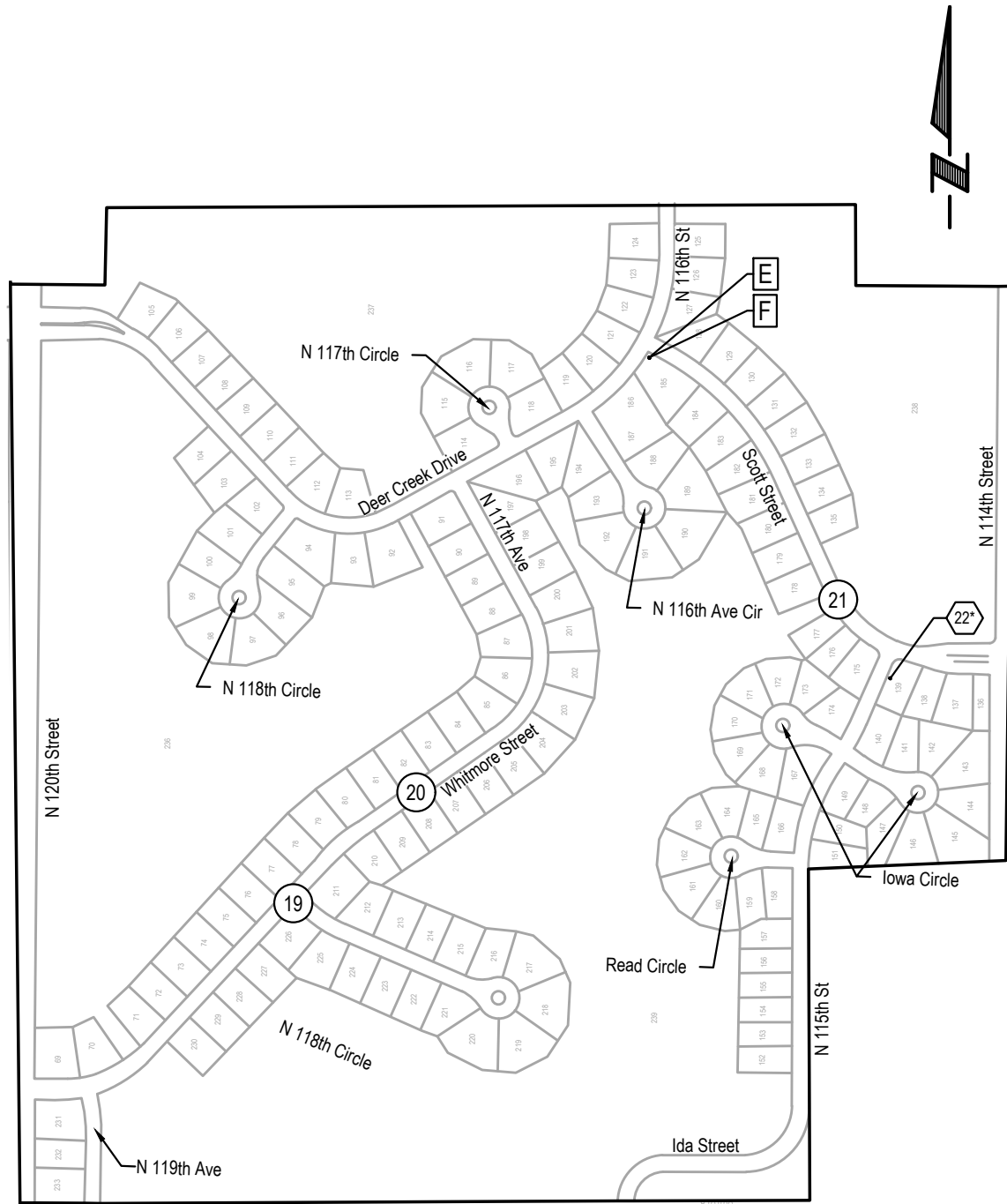
2023 STREET RECONSTRUCTION					
AREA NO.	TYPE	APPROX. DIMEN.		EST S.F.	NOTES
A	Curb Ramp	7	x	5	35.0 ADA Plate - Cast Iron
B	Sidewalk	4	x	4	16.0



**SMALL AREA CONCRETE PAVEMENT REPAIR DETAIL**  
 NOT TO SCALE



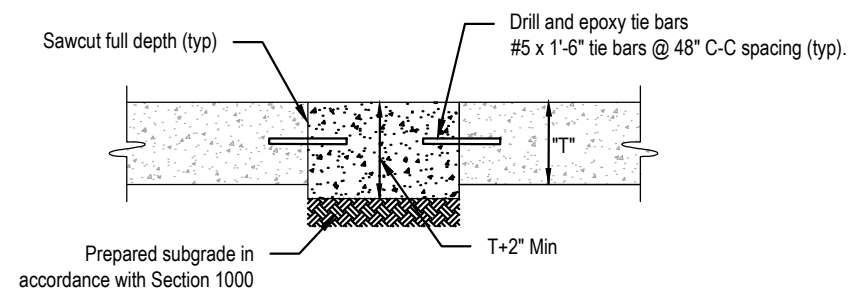
 <b>E &amp; A CONSULTING GROUP, INC.</b> Engineering • Planning • Environmental & Field Services <small>10809 Mill Valley Road, Suite 100 • Omaha, NE 68154                  Phone: 402.955.4700 • Fax: 402.955.3559                  State of NE Certificate of Authorization #CA0008</small>	<b>DEER CREEK                  2023 STREET                  RECONSTRUCTION</b> <small>SID 405                  DOUGLAS COUNTY, NEBRASKA</small>	<b>CENTRAL</b>				
Proj No: 2008.276.014 Date: 02/24/2023 Designed By: TMM Drawn By: ESN Scale: 1" = 48" Sheet: 3 of 6	Revisions <table border="1" style="width: 100%; border-collapse: collapse;"> <thead> <tr> <th>Date</th> <th>Description</th> </tr> </thead> <tbody> <tr> <td> </td> <td> </td> </tr> </tbody> </table>		Date	Description		
Date	Description					



2023 STREET RECONSTRUCTION									
AREA NO.	NO. POURS	SAW CUT L.F.	CURB L.F.	WIDTH	X	LENGTH	LARGE AREA EST S.Y.	SMALL AREA EST S.Y.	NOTES
19	1	30	20	10.0	x	10.0		11.1	
20	1	40	15	12.5	x	15.0		20.8	
21	1	70	45	12.5	x	45.0	62.5		

2023 STREET RECONSTRUCTION						
AREA NO.	TYPE	APPROX. DIMEN.		EST S.F.	NOTES	
E	Curb Ramp	8.5	x	23.25	197.6	ADA Plate - Cast Iron
F	Sidewalk	4	x	8	32.0	

2023 STREET RECONSTRUCTION - CURB INLET TOP		
AREA NO.	TYPE	NOTES
22*	1	Curb Inlet Top



**SMALL AREA CONCRETE PAVEMENT REPAIR DETAIL**  
 NOT TO SCALE



E & A CONSULTING GROUP, INC. Engineering • Planning • Environmental & Field Services 10809 Mill Valley Road, Suite 100 • Omaha, NE 68154 Phone: 402.265.4700 • Fax: 402.265.3559 www.eandagroup.com State of NE Certificate of Authorization #CA0008	
E & A CONSULTING GROUP, INC. Engineering Answers	
DEER CREEK 2023 STREET RECONSTRUCTION SID 405 DOUGLAS COUNTY, NEBRASKA	
EAST	
Proj No.: 2008.276.014 Date: 02/24/2023 Designed By: TAM Drawn By: ESN Scale: 1" = 48" Sheet: 4 of 6	Revisions Date Description 2/24/2023 2/24/2023 2/24/2023



2023 STREET RECONSTRUCTION									
AREA NO.	NO. POURS	SAW CUT L.F.	CURB L.F.	WIDTH	X	LENGTH	LARGE AREA EST S.Y.	SMALL AREA EST S.Y.	NOTES
1	2	55	30	9.0	x	30.0		30.0	
				10.0	x	15.0		16.7	
2	1	40	15	12.5	x	15.0		20.8	
3	1	85	40	12.5	x	60.0	83.3		Adjust Manhole
4	1	55	30	12.5	x	30.0		41.7	
5	1	30	10	10.0	x	10.0		11.1	
6	1	30	10	10.0	x	10.0		11.1	
7	1	100	75	12.5	x	75.0	104.2		
8	1	55	30	12.5	x	30.0		41.7	
9	1	55	30	12.5	x	30.0		41.7	
10	1	70	45	12.5	x	45.0	62.5		
11	2	50	30	15.0	x	25.0		41.7	
12	1	70	45	12.5	x	45.0	62.5		
13	2	85	60	12.5	x	60.0	83.3		
14	1	85	60	12.5	x	60.0	83.3		
15	1	145		12.5	x	60.0	83.3		
16	2	110	60	25.0	x	60.0	166.7		
17	2	110	60	25.0	x	60.0	166.7		
18	2	95	45	25.0	x	45.0	125.0		
19	1	30	20	10.0	x	10.0		11.1	
20	1	40	15	12.5	x	15.0		20.8	
21	1	70	45	12.5	x	45.0	62.5		

2023 STREET RECONSTRUCTION						
AREA NO.	TYPE	APPROX. DIMEN.			EST S.F.	NOTES
A	Curb Ramp	7	x	5	35.0	ADA Plate - Cast Iron
B	Sidewalk	4	x	4	16.0	
C	Curb Ramp	7	x	5	35.0	
D	Sidewalk	4	x	4	16.0	
E	Curb Ramp	8.5	x	23.25	197.6	ADA Plate - Cast Iron
F	Sidewalk	4	x	8	32.0	

2023 STREET RECONSTRUCTION - CURB INLET TOP		
AREA NO.	TYPE	NOTES
22"	1	Curb Inlet Top



Proj No: 2008.276.014 Date: 02/24/2023 Designed By: TAMW Drawn By: ESN Scale: N/A Sheet: 5 of 6	<b>TOTAL QUANTITIES</b>	<b>DEER CREEK 2023 STREET RECONSTRUCTION</b> <small>SID 405 DOUGLAS COUNTY, NEBRASKA</small>	 <b>E &amp; A CONSULTING GROUP, INC.</b> <small>Engineering Answers</small>	<b>E &amp; A CONSULTING GROUP, INC.</b> <small>Engineering • Planning • Environmental &amp; Field Services</small> <small>10809 Mill Valley Road, Suite 100 • Omaha, NE 68154 Phone: 402.955.4700 • Fax: 402.955.3559 State of NE Certificate of Authorization #CA0008</small>
--	-------------------------	---	---	--



Revisions	Date	Description
1	02/24/2023	TAM
2		ESB

COMPOSITE MAP

DEER CREEK  
2023 STREET  
RECONSTRUCTION  
SID 405  
DOUGLAS COUNTY, NEBRASKA



E & A CONSULTING GROUP, INC.  
Engineering • Planning • Environmental & Field Services  
10809 Mill Valley Road, Suite 100 • Omaha, NE 68154  
Phone: 402.955.4700 • Fax: 402.955.3559  
State of NE Certificate of Authorization #CA0008